



NONPROFIT ORG.
U.S. POSTAGE
PAID
HAMPDEN, ME
PERMIT NO. 2

Link-22

RSU 22 • Hampden • Newburgh • Winterport • Frankfort 24 Main Road North, Hampden, ME 04444 August 2014

16 from HA sign up for Bridge Year program at UTC

Sixteen Hampden Academy students have signed up to participate in the Bridge Year program at the United Technologies Center (UTC) in Bangor, a program that will allow them to earn up to 30 college credits while they are still in high school.

The students, who are starting their junior year

at HA, will take career and technical education (CTE) courses at UTC in the morning and then take college-level courses in English, math, science, and social studies at HA in the afternoon.

The college courses will be taught by Hampden Academy teachers, who have been appointed as

adjunct professors by the University of Maine or the University of Maine at Augusta, depending on which institution issues the credits.

The HA faculty members will be working with UMaine or UMA professors to deliver their classes over the course of a high school year instead of one semester.

By the time they're ready to graduate from HA in June 2016, the Bridge Year participants will have earned up to 30 college credits—enough so they could enroll at UMaine as a sophomore or get an associate's degree at Eastern Maine Community College in one year instead of two.

At UTC, the students will enroll in a one-year or two-year career or technical education program, depending on their career goals and personal interests.

For example, one HA student who said he wanted to become a game warden was planning to study outdoor equipment (snowmobile and 4-wheeler) maintenance at UTC during his junior year and enroll in one of the public safety programs during his senior year.

The students who have been accepted into the Bridge Year program and the CTE program they plan to sign up for are: Ashton Allen, Public Safety; Hunter Christian, Welding; Loreli Crawford, Public Safety; Par-

(Please turn to page 3)



REEDS BROOK TRAIL SYSTEM NEARING COMPLETION—Hampden Academy senior Ryan Cole (center) and his father, David Cole, put decking on the bridge over Reeds Brook that Ryan has been building as his Eagle Scout project. The bridge is part of the Reeds Brook Trail System, which is under construction behind Reeds Brook Middle School. Thanks to a lot of volunteers, the trail system is almost complete. Hampden residents Kip Nelson (left) and Shawn Ramsay (not in photo) turned out for the first of two trail maintenance days on August 9. The second trail maintenance day is Saturday, Aug. 23. See story (reprinted from the July 31 Bangor Daily News) on p. 7.

Advisory Board helps revamp GT program

The gifted and talented program in RSU 22 is being revamped with the help of a new advisory board that was formed last year and a new full-time coordinator who is starting work this fall.

As a result, the district has started identifying students who qualify for GT services while they're in third grade, instead of at the beginning of fourth grade.

And starting this year, students who are identified as GT will be getting Individual Learning Plans (ILPs), which will identify the area(s) where the GT students need additional rigor, how that rigor will be provided, and how the students' progress will be assessed.

"The RSU 22 Board of Directors had a strategic plan that included a vision to grow the district's gifted and talented program and to breathe new life into it," said Christine Boone, principal at George B. Weatherbee School and interim GT coordinator last year.

As a result of that vision, the Board endorsed a budget that increased a half-time GT position to full-time, allowing the district to hire Dr. Ruth Lyons (no relation to RSU 22 Superintendent Rick Lyons) as full-time GT coordinator.

"Dr. Lyons will be a huge asset to us," says Mrs. Boone. "She'll oversee

the GT program K-12 and serve as administrator, teacher, and case manager. Eventually, every student in grades 3-8 who is identified as GT will have an ILP. If a student's ILP can't be met by the GT or regular education teachers, then it becomes Dr. Lyons' responsibility as

GT coordinator to find the required services. She may find a mentor or enter into a contract with the University of Maine, or she could wind up being the student's primary instructor."

Mrs. Boone said the first step in *(Please turn to page 5)*

Dr. Ruth Lyons new GT coordinator

Dr. Ruth Lyons, director of the Dr. Joseph S. Renzulli Gifted and Talented Academy in Hartford, CT, since it was founded in 2009, has joined the staff of RSU 22 as coordinator of the district's Gifted and Talented (GT) program.

The academy is named after Dr. Joseph Renzulli, director of the National Research Center on Gifted Education and Talent Development at the University of Connecticut. Dr. Renzulli and Dr. Sally M. Reis, the center's principal researcher, developed the school's curriculum.

Dr. Renzulli and Dr. Reis brought Dr. Lyons to Hartford to help start up the academy, which opened as a school within a school for high potential/high poverty students in grades 4-6. During the past five years, under Dr. Lyons' leadership, the school moved into its own building and expanded to include grades 4-10. This June, it was honored by



Dr. Ruth Lyons

the state Department of Education as a Connecticut School of Distinction—the only Hartford school to be *(Please turn to page 6)*



Chloe Thurlow with trophy.

Chloe Thurlow is national winner in civic oration contest

Often in school students are told to "speak your mind" or "speak up." Well, that's not much of a problem for Reeds Brook Middle School 8th grader Chloe Thurlow, who recently won the top prize nationwide in the 2014 Modern Woodmen of America's Civic Oration contest.

Chloe won a \$2,000 College Savings Account and a trophy in the national competition, which has been *(Please turn to page 6)*

RSU 22 Drug Free Communities Committee asking parents to complete survey

The RSU 22 Drug Free Communities Committee is asking parents and other adults in the Hampden area to complete a short survey to help the committee learn more

about community perceptions about drug and alcohol use among teens. The survey is available online at <http://surveys.hornbyzeller.com/Modules/Surveys/RSU22.aspx>.

If you would prefer to fill out a paper copy of the survey, you can call the RSU 22 Central Office at 862-3255, and a copy of the survey form will be mailed to you.

The survey is being funded by a Drug Free Communities Grant that was awarded to Bangor Health and Community Services in October 2012. The five-year grant was to support youth substance abuse prevention work in Brewer, Hampden, and Hermon—and in the schools in those communities.

The Drug Free Communities (DFC) program is a federal program, overseen by the White House Office of National Drug Control Policy. The goals of the DFC program are to reduce youth substance use and strengthen community collaboration. The three communities were selected as partners by Bangor Public Health and Community Services due to past successful collaborations, and capacity to implement the goals of the grant. RSU 22 was a natural partner due to its commitment to the Coordinated School Health Program.

A major objective of the DFC program is to collect data on youth substance use trends and to use that data to create and implement plans of action. Public schools are a key partner in this data collection effort, as they may participate in the Maine Integrated Youth Health Survey (MIYHS), a statewide survey conducted every other year. RSU 22 participates in the survey, and in addition, agreed to aid in the facilitation of student and staff focus groups which were conducted over the course of the last several months.

The program is designed to work through a coalition that includes young people, parents, school and townofficials, health care professionals, and representatives of the media, youth organizations, law enforcement, religious and civic groups, volunteer organizations, and substance use reducing organizations.

The coalition in the Hampden area has been meeting monthly at Hampden Academy with active support from RSU 22 including the superintendent and assistant superintendent, administrators, school nurses, and the school resource officer. Also participating have been several parents of RSU 22 students, a local physician, and a local media professional.

The Hampden group has formed three working sub-committees—School



Five Hampden Academy students were featured in a recent PSA that the Hampden Drug Free Communities Committee created as a way to inspire youth to make healthy choices and avoid marijuana use so that they can reach all their future goals. Above, the students are (l. to r) Jacob Gran, Ashley Woodside, Keenan Soule, Nick Nadeau, and Courtney Sargent.

Policy Review, Parent and Community Engagement, and Creating Awareness re: the Consequences of Youth Substance Use. The goal is to work toward youth substance use reduction by implementing comprehensive environmental strategies.

The Parent and Community Subcommittee determined it was important to learn more about the community perceptions of drug and alcohol use among teens. This subcommittee is asking parents to complete a short survey to determine parent and community perceptions on youth substance use and how we can best move forward to address this issue.

The survey is aimed primarily at parents of students who are pre-school to secondary school-aged, but any parent or community member is welcome to participate.

Robin Carr-Slaunwhite, a project coordinator with Bangor Health and Community Services who has been working on the Drug Free Communities grant, says the Hampden group decided not to hold face-to-face meetings in July and August, but will resume meeting in September. The date for the September meeting hasn't been determined, but anyone interested in receiving an invitation is welcome to email Robin at robin.carr.slaunwhite@bangormaine.gov.

She says the group is definitely interested in more participation by community members—in particular, people with an interest in youth substance abuse prevention and representatives of the business community and local churches.

Letter to RSU 22 Parents

Dear RSU 22 Parents,

We are working on a community-wide project to reduce and prevent youth substance use in our communities. These efforts are part of a federal grant project in collaboration with Bangor Public & Community Services, called the Drug Free Communities Support Program.

Currently we are in the planning stages of this project. Fortunately, RSU 22 participates in the Maine Integrated Youth Health Survey, which gives us a lot of information about youth health choices and perceptions. While the student survey is a great tool, we'd very much like to hear from parents about these important issues as well.

We've created a brief survey for parents, and hope that you will be willing to participate. Hornby Zeller (an evaluation firm in Maine) is hosting the survey online, and will be compiling the results for us. The survey will take 5-10 minutes to complete, and all of your answers are confidential. You can also enter a drawing for a \$50 grocery store gift card after you complete the survey. The drawing is separate from the survey, and won't be linked to your feedback.

To take the survey, please go to:

<http://surveys.hornbyzeller.com/Modules/Surveys/RSU22.aspx>

We appreciate your help. If you would like a hard copy of the survey, please contact the Central Office at 207-862-3255 and we will mail one to you.

If you would like more information about the DFC project, or the Maine Integrated Youth Health Survey please visit the RSU 22 website.

Thanks in advance for your help,
RSU 22 Drug Free Communities Committee

RSU 22 Board of Directors would like your opinion: Should we lengthen the school day, and if so, how?

Dear Parents/Guardians and Citizens,

The Education Committee of the RSU 22 Board of Directors has been discussing lengthening the student academic day. The Committee is considering extending the academic day by thirty (30) minutes, beginning in the fall of the 2015-2016 school year.

The curricula for our students have expanded and changed over recent years. Beginning in 2018, students must demonstrate proficiency for defined standards in order to graduate from Hampden Academy. The state and local standards are being implemented and new, more rigorous, assessment practices are being incorporated. Additional time would provide more opportunities for students and would also provide more flexibility for our learners.

In addition, the RSU 22 Education Committee members are considering implementation of a K-12 world language program.

The brief survey is intended to involve you in the process and to assist the Education Committee, the Board of Directors, and the administration in planning for the future. After the survey results have been compiled, public forums will be scheduled to continue the discussion.

You may respond to the survey by going to "Survey Monkey" on the Internet:

<https://www.surveymonkey.com/s/ZR9CP7T>

Or you may mail a copy of the survey to:

RSU 22, Office of the Superintendent,
24 Main Road North,
Hampden, Maine 04444

Thank you for your interest in RSU 22,

Richard A. Lyons, Superintendent of Schools

Length of School Day Survey Form

1. Do you support adding 30 minutes to the regular school day? YES NO
If no, please proceed to the additional comments box below.
2. Would you prefer adding 30 minutes at the end of the school day? YES NO
3. Would you prefer adding 30 minutes to the beginning of the school day? YES NO
4. Would you prefer adding 15 minutes to the beginning of the school day and 15 minutes at the end of the school day? YES NO
5. Additional Comments:



Link-22

RSU 22 • Hampden • Newburgh • Winterport • Frankfort 24 Main Road North, Hampden, ME 04444

is published by Maine Regional School Unit No. 22 for the citizens of Hampden, Newburgh, Winterport, and Frankfort.

Richard A. Lyons, Superintendent of Schools
David C. Wollstadt, Editor (www.SchoolNewsletters.net)

Maine Regional School Unit No. 22
24 Main Road North, Hampden, ME 04444

207-862-3255

www.rsu22.us

16 incoming HA juniors sign up for Bridge Year program at UTC

(Continued from page 1)

tick Dearth, Business Management Technology; Brian Dysart, Outdoor Equipment; Nathan Flewelling, Business Management Technology; Emily Gagner, Public Safety; Vincent Gilmore, Public Safety; Nicholas Hashey, Heavy Equipment Technology; Laura Landry, Business Management Technology; Mikala Leland, Public Safety; Amber Melvin, Public Safety; Cody Romano, Electrical; Cameron Scott, Business Management Technology; Zach Todd, Outdoor Equipment; and Catherine Trojecki, Robotics Engineering Technology.

HA faculty members who will be teaching college classes as adjunct professors are Lisa Scofield, English; Mike Ditzel, math; Jason Dorr, social studies; and Brad Veitch, chemistry. Guidance counselor Erica Largay has been coordinating the program at HA.

The two-year Bridge Year program is a partnership involving UTC, the University of Maine system, and area high schools. The program was introduced by Gov. Paul LePage in 2012 and piloted by Hermon High School. Bangor High School was added to the program last year.

This year, Hampden Academy and Brewer High School are joining the program, along with Ellsworth High School, Houlton High School, Waterville High School, and Medomak Valley High School of Waldoboro.

HA and Brewer High School will partner with UTC. The other high schools will partner with nearby CTE programs.

One of the advantages of the Bridge Year program is that stu-

dents (and their parents) can save a lot of money on college tuition.

Bridge Year students pay \$45 per credit hour for courses that are accredited by the UMaine and \$35 for courses that are accredited by UMA. By contrast, the in-state tuition for regular students is \$279 per credit hour at UMaine and \$217 per credit hour at UMA.

A student who earns 29.5 credit hours through the Bridge Year program will pay tuition of \$1,327.50. If he took that same number of credit hours as a regular UMaine student, his tuition bill would be \$8,230.50.

Another advantage is that students who are enrolled in the Bridge Year program are formally enrolled at the University of Maine and the University of Maine at Augusta, and they have transcripts at whichever school accredited the courses they took.

Because the students are regarded as university students, the credits they earn are accepted by most institutions of higher learning. For example, a recent Bridge Year graduate from Hermon High School found that all of his UMaine credits were accepted by Unity College.

The benefits of being in the Bridge Year program go beyond tuition savings. Students enrolled in the program are issued UMaine and UMA ID cards that entitle them to use university libraries, the new UMaine fitness center, and athletic facilities.



Hampden Academy Bridge Year students go through a team-building exercise during the Bridge Year Summer Academy, which was held July 14-16 at Eastern Maine Community College.

HAMPDEN ACADEMY



They can even stand in line in zero-degree weather to get free admission to UMaine hockey games.

The first official activity of the Bridge Year program was a three-day Summer Academy, which was held July 14, 15, and 16 at Eastern Maine Community College.

Students from both HA and

Brewer High School stayed in the dormitories at EMCC and engaged in a series of team-building activities at the UMaine low ropes course and at the Foster Innovation Center.

They also visited four potential employers, both public and private—Dirigo Pines, the Maine State Police, Cianbro, and WLBZ-2.

JCL 'praetors' seek community outreach activities to promote Latin, classics

Laura Fairman and Katie Ross, the "praetors" for Hampden Academy's Junior Classical League, have plans to make the study of Latin more attractive to local students.

As "praetors," they're responsible for community outreach, which is something that they believe is much needed.

"We really want to do more things to reach out to the community," Laura says. "We want to keep some of our old traditions, like painting pumpkins at Halloween to donate to the hospital, but we need to develop some new traditions, as well."

The new outreach activities they're looking at focus on middle school students and elementary students. Over time, they have two objectives—to raise the profile of the Junior Classical League at HA, and to begin teaching the cultures of Greece and Rome



Junior Classical League "praetors" Laura Fairman and Katie Ross do a craft project with students at Weatherbee School.

so that Latin becomes more attractive to elementary school students when they get to high school.

Katie said the JCL recently hosted a middle school dance at HA to collect canned goods for the Winterport and Hampden food cupboards.

"We had kids dress in togas, and we decorated the room to look like ancient Rome," she said. "We had a pretty good turnout. It was a good event to get the two schools to mix—they'll both be attending Hampden Academy in the future—and get the Junior Classical

League more recognition. It will raise our profile."

League more recognition. It will raise our profile."

League more recognition. It will raise our profile."

League more recognition. It will raise our profile."

League more recognition. It will raise our profile."



Learning about water movement.

Hampden Academy Child Development Class Nursery School

The Hampden Academy Child Development classes will be conducting their annual nursery school, starting in October.

Applications are now available for 3-5 year olds, pre-K.

For more information, please email Terry Deane at tdeane@rsu22.us, or call the high school, 862-3791.

League more recognition. It will raise our profile."

League more recognition. It will raise our profile."

League more recognition. It will raise our profile."

Wagner Middle School principal earns Doctorate in Educational Leadership

Richard Glencross, principal at Wagner Middle School for the past four years, has received his Doctorate in Educational Leadership from the University of Maine.

An August graduate, he completed the oral hearing on his dissertation, "Understanding Assessment and Accountability Policy Influences on Leadership Decisions to Improve Curriculum and Instruction," on July 18.

Dr. Glencross says his research was focused on small rural schools in Maine, where he interviewed principals, curriculum coordinators, and teacher leaders to learn about how they make decisions to improve curriculum and instruction in the current policy climate.

He said he chose his topic because he was interested in both leadership decision-making and education policy—in particular, how the assessment and accountability requirements of No Child Left Behind have affected decision making by educational leaders.

He said there has been a lot of criticism that the testing requirements of NCLB has resulted in a narrowing of the curriculum,

emphasizing math and reading to the detriment of other areas, such as music, art, foreign languages, science, and social studies.

"I wanted to learn more about these pressures so I could inform my work as a principal," Dr. Glencross said. "Educators need to be careful to avoid this problem. They need to focus their decisions strategically in order to avoid narrowing the curriculum."

He said his research led him to conclude that the most effective way to implement sound education policies is to adopt site-based decision-making processes—collaborative efforts between administrators, teachers, and even community members rather than a top-down structure.

Dr. Glencross has been principal at Wagner since 2011. Previously, he served as chair of the special services department at Maine Central Institute for a year, assistant principal at Ellsworth Elementary-Middle School for two years, and as a special education teacher in Ellsworth for nine years.

A native of Nova Scotia, he attended high school in Antigonish and

WAGNER MIDDLE SCHOOL



graduated from St. Francis Xavier University in 1987 with a bachelor of arts degree in English. He holds dual U.S.-Canadian citizenship, as his father was a U.S. citizen.

He held a series of jobs in western Canada and North Carolina before deciding to embark on a second career in education. He moved to Maine and earned a B.S. degree in Secondary Education at the University of Maine in Presque Isle in 1996. He taught in Ellsworth for a year and

Bangor for two years, before accepting a fulltime job as a special education teacher in Ellsworth.

He received his Master's degree in Special Education from the University of Maine in 2003 and started working on his doctorate in 2006.

Dr. Glencross and his wife Karen live in Bangor. They have two children, a daughter who is a sophomore at the University of Southern Maine and a son who is a junior at Bangor High School.

'Welcome to Wagner Night' 5:30-6:30 p.m. Aug. 26

"Welcome to Wagner Night" will be held at Wagner Middle School on Aug. 26 from 5:30 to 6:30 p.m.

The invitation is for all students (and family members) who will be attending Wagner for the first time this

fall. This includes 5th graders and students who have moved into town.

Students will be able to meet and greet with teachers, tour the school, find their assigned lockers and practice opening them.

Weatherbee Teams are up and running for the new school year

As was highlighted in our last issue of Link 22, the instructional model at Weatherbee school has been adjusted for the 2014-15 school year. Teachers have been placed in teams of two or three so that they can specialize in fewer subject areas, provide more focused instruction in those areas, and really plan in depth for individual needs of learners in those subjects. The teams are balanced based on everything from teacher expertise through additional content area degrees and certificates to years of experience teaching that subject or most current training.

Students on any given team will stay together as a class and move back and forth between their two or three teachers as needed. Teams



will present one common website and newsletter. Teachers will have daily common planning time around their lunch block so that they may communicate the specific needs of students on any given day. Professional Learning Community (PLC) meetings will stay in place for overall

grade level work and teachers will also meet regularly at the end of the school day with their content area colleagues. For example, on assigned days, every teacher who has a reading focus will send their remaining students to a colleague promptly at 3 p.m. so that they can meet as a

reading team. If you child shares that they boarded the bus from a team teacher's classroom, it will be so that their homeroom teacher can meet with colleagues to plan and assess.

Weatherbee Grade 3 Teams

- Tricia Richardson and Dawn Hussey.

- Angela Pratt, Jen Jones, and Rebecca Gross.

Weatherbee Grade 4 Teams

- Meghan Schall, Kacey Cole, and Lee Birmingham.

- Christy Whitehouse, Shannon Peterson, and Kris Worster.

Weatherbee Grade 5 Teams

- Renita Downer and Matthew Lindemann.

- Susan O'Brien, Carol Kiesman, and Shawn McKee.

Before-school 'accelerated learning' program starting up at Weatherbee

If you have a child at Weatherbee school (or had a child there in recent years) you are likely aware that teachers offer interventions during the school day to reteach missing skills or provide specific instruction around standards that require additional support. These interventions are serving students well and will continue, and this year they will be embedded in math and literacy or writing blocks.

In addition, starting this fall, Weatherbee will be offering a select group of students an opportunity to participate in a before-school accelerated learning program. This is not pre-teaching. Rather, it's a program that's designed to stimulate thinking, introduce vocabulary, and generally prepare students for lessons they will be learning later in the week or early the next week.

We don't want to fix something that isn't broken, but we do think it's important to take a second look at what we're doing for struggling learners. As a result, we revisited the research around accelerated learning. A recent text by Suzy Pepper Rollin (in *Learning in the Fast Lane: 8 Ways to Put ALL Students*

on the Road to Academic Success) reminds us how introducing concepts, vocabulary, and basic skills in advance can set a student up for success when they participate in the classroom instruction for the first time. According to Rollins, the "key knowledge is provided ahead of time, enabling students to connect to new information." The classroom instruction becomes more relevant to the students because they have recently learned about the topic in a small-group setting.

Christine Boone, principal at Weatherbee, says this is an area where research and personal experience agree.

"The research shows that self-confidence and engagement increase as a result of these small-group sessions," she says. "Equally important, we know from our own experience that they work."

Mrs. Boone says she plans to call them "success starters," and they'll be offered before school on Mondays, Tuesdays, and Thursdays.

"Our intent is to generate the thinking, purpose, and curiosity through these success starters," she says. "In small groups, which will

change as needed, certain students will participate in focused instruction. It will help these students clearly articulate and connect with upcoming learning goals and targets. The idea is that one or two days before the larger class begins a unit of study, these select students will begin acceleration with a thought-provoking, hands on activity."

To make this model a reality Cyr Bus has agreed to let small groups of Weatherbee students ride the Reeds Brook bus in the morning in order to arrive prior to the Weatherbee 8:50 start time. Reeds Brook students currently have the option of staying late with their teachers for help and riding the elementary bus home. Now Weatherbee students will have a similar opportunity that will allow them to arrive early in the morning.

Weatherbee students who ride the Reeds Brook bus in the morning will head to the Weatherbee library whenever the bus drops them off. At the library, they will read or play learning games with a volunteer until the official 8 a.m. start time, when they will begin targeted

instruction with an educational technician.

Mrs. Boone says parents may choose to drive their children to the before-school sessions, or they may opt out of the program if they know their children are not early risers and need that additional sleep time to work right through until 3 p.m. Coming early does not mean they get to leave early.

"This program won't fit all learning needs, but we expect that there will be enough students who will benefit from the acceleration to at least try," says Mrs. Boone.

She notes that this plan does not add any additional hours to support staff work days since they arrive at 8 a.m.

Literacy specialist Leigh Charles has offered to develop the lessons and gather necessary materials for staff to use. She will complete all the planning in advance for the volunteer and the educational technicians. Parents will be contacted if their child is a match for any success starter lessons from the Weatherbee LBC (Learning Boot Camp).

Summer lunch program at Smith great success; last day is August 22

The summer lunch program offered at the Leroy H. Smith School has been a great success! Area children ages 0-18 came to enjoy nutritious lunches.

Head cook Patty Preston said the program provided more than just a

good lunch.

"It was a great time for socializing, eating a healthy, balanced meal and accessing the playground for exercise afterwards," she said. "Families had an opportunity to keep in touch with

old friends and meet new ones."

If you didn't take advantage of the summer lunch program, there's still time left. Meals will be served from 11:30 a.m. to 12:30 p.m. at the Smith School cafeteria Monday through

Friday until August 22. The meals are FREE, and you don't have to be a student at Smith to take part.

Hope to see you this week.

And be sure to look for our summer meal program next year!!

Kindergarten students invited to Open House at Smith School

All Kindergarten student are invited to take a ride on the bus while parents hear about bus rules and regulations: Wednesday, August 20 at 6:30 p.m. in the Smith School Library.

Just before the bus ride program, Ms. Boss and Ms. Rancourt

will hold an open house for their Kindergarten students on Wednesday, August 20 from 6 to 6:30 p.m.

The following week, Mrs. Kocik will hold an open house for her Kindergarten students on Tuesday, August 26, from 6 to 6:30 p.m.



Smith School students participate in 'Summer Book Swap'

Learners at Smith School were invited this summer to participate in a "Summer Book Swap." Children were provided with three books at their reading level at the end of the school year.

Each Monday and Thursday, thanks to teachers who volunteered their time, learners were invited to come into the library and swap their books for three new ones. Our goal was to provide a variety of literature to students, at the appropriate reading level, over the summer, as well as to keep everyone reading.

We hope to expand the project next summer so all the wonderful reading by Smith School learners will continue! Happy reading!



Smith School students check out which books they want to take home as part of the school's Summer Book Swap program.

New Advisory Board helps revamp RSU 22 Gifted and Talented Program

(Continued from page 1) implementing the Board's vision for GT education was to recruit volunteer staff members for the GT Advisory Board. In addition to Mrs. Boone, last year's advisory board included Mary Giard, RSU 22 Curriculum Director; Dawn Moore, principal, Smith School; Kate Foran, teacher at Smith who started working on her GT certification last year; Carol Kiesman, regular ed representative and former GT teacher; Jen Huerth, GT teacher and case manager at Reeds Brook and Wagner; Georgianna Jackson, GT teacher, grades 3-5; Beth Kilgore, social studies teacher at Hampden Academy who also provides GT case management services; and Angela Moore, former assistant special education director for RSU 22 who is now working in Brewer.

Everyone except Ms. Moore will continue to serve on the advisory board this year.

One of the changes that occurred last year was that the advisory board analyzed GT services in the district and identified some inequities.

"We saw that students in one school were getting almost three times the services as students in another school," Mrs. Boone said. "As a result, the advisory board brought equity to the elementary level of GT programming."

She said that the discrepancy was resolved with a simple schedule change—and extensive communication to the two school communities to explain the reasons for it.

"We may have had 12 students at one school receiving GT services and two students at another school, but those two students required the

same number of lessons as the 12," Mrs. Boone said.

The advisory board also recommended changes in the way GT students are identified in order to include students who have the aptitude to do well but may not be performing at high levels on a daily basis or who don't test well.

Maine law requires school districts to identify a maximum of 5 percent of the overall student population as eligible for gifted and talented services. In RSU 22, these services are provided through the Explorer program.

In previous years, RSU 22 had used a combination of standardized test scores and subjective referrals from teachers, parents and students (students can self-refer or refer a peer) to identify eligible students.

Last year, the district added the CogAT, a cognitive aptitude test that screens for gifted traits.

"We added the CogAT so we could identify students who would otherwise slip through the cracks because their aptitude isn't reflected in their classroom performance or test scores," said Mrs. Boone. "The achievement tests (NWEA and NECAP) that we've been using were helpful and worked, but the CogAT gives us a more complete picture. We don't want to identify only the bright students who study hard and perform well on standardized tests or class work. We also wanted to make sure that we find those students with POTENTIAL and then grow those students to achieve at high levels. The CogAT helps us do that, and we hope to add more tools to this process in future years."

Students identified as GT are identified for either specific subject

areas—math, language arts, science, social studies, etc.—or "overall cognitive aptitude" (OCA).

At this point, incoming grade 4 students and a few students in middle school who have been identified as GT have ILPs. During the coming year, 3rd graders who are identified will get ILPs, and we'll start developing ILPs for middle school students. Eventually, all GT students in grades 3-12 will have ILPs.

The GT budget currently funds two positions—the GT coordinator (Dr. Lyons) and the grades 3-5 GT teacher (Ms. Jackson)—but Mrs. Boone points out that a lot of regular education teachers are providing GT services.

"We have a high percentage of need for GT services in RSU 22," says Mrs. Boone. "The law says we should identify 5% of the student population as GT, but we have a lot more than 5% who need additional rigor. The regular education teachers have to meet students' needs, whether or not they qualify for a special program."

One of the ways RSU 22 teachers have responded to the challenge has been to participate in a professional development initiative on complex reasoning and higher-level thinking that curriculum director Mary Giard has been offering for the past two years.

The training is provided by Dr. Debra Pickering of Colorado, who has been working with a number of school districts in Maine.

Mrs. Boone says half of the staff at Weatherbee School have taken the training and have come back excited and anxious to use the strategies that they learned.

"The staff who have attended the

sessions have shared the strategies with teachers who weren't able to attend," she says, "It just becomes a way of life for everyone. The practice of teaching gifted education is best practice for all of us; it just becomes an issue of time and training. Complex reasoning is one way to tackle that."

At Hampden Academy, the ILPs will probably focus on course selection because of the number and variety of high-level courses that are available.

"The GT program for grades 9-12 is solid the way it is," Mrs. Boone says. "We'll have to do some additional screening for the visual and performing arts, which is an area where we have been under-identifying—but not under-serving—the GT population."

She said the visual and performing arts teachers have met and are developing screening tools and gathering resources so they can identify GT students. However, if you look at the visual and performing arts programs that RSU 22 offers, the services are clearly in place to keep kids challenged.

Hampden Pre-K openings still available

Pre-K openings are still available for the Hampden Pre-K. Applications can be obtained by calling Penquis Child Development at (207) 973-3567, or online at www.penquis.org.

2014-2015 School Calendar at a Glance

August 18	Fall Sports Begin, Hampden Academy
August 25	Teacher Management Day
August 27	First Day of School PreK-9
August 28	All Students Attend PreK-12
September 1	Holiday - No School
September 26	Early Dismissal - In-service
October 13	Holiday - No School
October 31	End First Quarter
November 10	Early Dismissal for Parent Teacher Conferences
November 11	Holiday - No School
November 24, 25	In-service - No School
November 26-28	Holiday Break - No School
December 12	Early Dismissal - In-service
December 24-31	Holiday Break - No School
January 1, 2	Holiday - No School
January 19	Holiday - No School
January 23	End Second Quarter
January 26	In-service - No School
February 16-20	Winter Vacation - No School
March 6	In-service - No School
April 3	End Third Quarter
April 20-24	Spring Vacation - No School
May 25	Holiday - No School
June 12*	Last Day of School for Students
June 14	High School Graduation
June 15 & 16	In-service Day for Teachers

* 3 storm days are included and may alter closing date

RSU 22 ADULT EDUCATION: Fall 2014

HiSET Replaces GED:

The State of Maine announced that it had contracted with Educational Testing Services to provide its High School Equivalency Test (HiSET) as a replacement for its GED Test starting in January 2014. The HiSET essentially covers the same academic material as the GED and will be offered by pen-and-paper or electronically in Maine. The HiSET consists of five sub test areas: Mathematics, Social Studies, Science, Reading and Writing. Please contact our office (862-6422) if you have any questions about the HiSET or want to schedule HiSET testing in Hampden starting in mid-September.

High School Completion Courses:

Our program continues to provide adult learners with the opportunity to earn an Adult Education High School Diploma. We offer students a variety of in-person, independent study and online classes that can help them work towards a diploma. We also offer free one-to-one basic literacy and ESL tutoring to adult learners throughout the year. If you are interested in earning a diploma through our program, bring in a copy of your last high school transcript and we can sit down with you to discuss your options.

Career Training Programs:

We are, again this fall, excited to be able to offer our resi-

Personal Enrichment Courses:

The following is a partial list of enrichment courses that we are offering to our residents this fall. Most of these classes start in late September or early October. For a more complete listing of our courses, go to www.rsu22.us or www.riversideadulthoodpartnership.com.

Boston Quincy Market Trip	Fryeburg Fair Trip	Penny Rugs	Watercolor Painting
Digital Photography	Beekeeping	CPR / First Aid Training	Intro to LinkedIn
Caribbean Cooking	Caring for Your New Puppy	Self-Defense for Women	Cardio Fitness
Heart Rhythm Meditation	Tai Chi	Basketball Officiating	iPad for Beginners
Buying & Selling on eBay	Caring for Your Kitten	First Aide for Pets	Caring for Your Cat
Pet Dental Care	Zumba	Yoga	Kayaking
Hunters Safety	Stained Glass	Fused Glass	Pickle Ball
Christmas Wreath Making	radKids Safety	Maine Driving Dynamics	Gluten Free Cooking
Kitten Socialization	College Application Prep	Flea Markets 101	Knitting & Sewing
Flower Arranging	Buying & Selling a Home	Japanese Language & Culture	

dents access to a wide variety of career training courses through partnerships with Orono Commons and OHI such as Certified Nurse's Aide (CNA), PSS, CRMA, MHSS and CNA-M. We are now able to also offer a series of new health occupations courses that will allow students to pursue careers such as Pharmacy Technician, Dental Assisting, Medical Coding & Billing, Electronic Health Records, Phlebotomy Technician and Medical Terminology. These courses offer a combination of online and live laboratory work that allows students to prepare for national level certification tests in six to twelve months.

Distance Learning Courses:

We are excited to be able to offer nearly 400 interactive online courses to our residents. A wide variety of professional development and personal enrichment courses are now available to register for at: www.ed2go.com/rsu22. All classes are instructor-led, fit into convenient six-week formats and are affordably priced. Some of the more popular courses are: Microsoft Excel and Word; QuickBooks; Effective Business Writing; Assisting Aging Parents; Creating Web Pages; A to Z Grant Writing; Digital Scrapbooking; Buying & Selling on eBay; Beginner Blogging; Math Refresher; Navigating Divorce; Genealogy Basics; Teaching with SMART Boards; Grammar Refresher; Test Preparation Courses: LSAT, SAT, ACT, Praxis, GRE.

Chloe Thurlow wins national honors in Modern Woodmen Civic Oration Contest

(Continued from page 1)
an annual tradition for thousands of middle school students since 1948.

Every year the speech theme changes and this year's topic was "The Importance of Healthy Living." Chloe's speech was titled, "Your Beauty Exists Deeper."

Reed Farrar, 8th grade English language arts teacher at Reeds Brook, says teachers have encouraged students participating in the oration contest to be creative with the prompt and to think outside of the box as they prepare their speeches.

"To make these presentations more interesting for the class audiences, we try avoid the generic, one-size-fits-all approach," Mr. Farrar says. "We love to hear an approach to the essay that no one else has thought of, but still fulfills the criteria of the contest."

Each year several hundred students from Reeds Brook and Wagner Middle Schools participate in the competition. The speeches need to

be 3 to 5 minutes long and students may use notecards or printed pages. Their presentations are judged with a scoring rubric on a wide variety of skills, including organization and clarity of the writing, color and voice, enunciation and volume, eye contact and using effective gestures.

"Chloe asked me about this year's topic over the winter and then got to work quickly," Mr. Farrar said. "She revised and made great adjustments to her speech delivery prior to each level of competition."

In her presentation, Chloe tells young people that it's important to have a healthy self image and value the inner qualities that make everyone unique. She also cautions students not to model themselves after unrealistic images portrayed in the media. Chloe received feedback and writing advice from Karyn Field, her ELA teacher, and practiced the speech dozens of times with her peers.

"The emphasis on persuasive writing and public speaking are fea-

tured parts of the Common Core and the Maine Learning Results," says Mr. Farrar. "Although speech contests may seem old fashioned nowadays, these are valuable skills that young people will need in college and in their professional careers."

On April 9, Chloe delivered her speech at the school-wide competition along with five other finalists. Chloe took first place. Nicholas Parker, another 8th grader came in second, and Chloe Lawrence, a 7th grader, came in third.

From there Chloe and Nick moved onto the regional competition at Holbrook Middle School on April 30. Chloe took 2nd place overall, which earned her a spot in the state finals, hosted on May 8 at Samuel Wagner Middle School. Again she finished in first place, which meant she would represent the state of Maine in the national competition.

On June 5, back on the familiar stage of Reeds Brook Middle School, Chloe read her speech one final

time to a select audience of friends, her mother, her ELA teacher Karyn Fields, and Dale Tudor from the Modern Woodmen of America. Mr. Farrar filmed the speech, edited the video and sound, and sent a DVD to the national office of Modern Woodmen in Rock Island, IL.

After the national office received dozens of videos from finalists all across America, Chloe learned the exciting news that her speech had won first place in the nation. The entire RSU 22 community is proud of her great achievement.

Chloe will be a freshman at Thornton Academy this fall, as her father has a new job in southern Maine and her family is in the process of moving to Saco. She's looking forward to participating on the speech team at her new school.

Her future plans include a career in journalism. "I'm really into writing," she says. "I want to get into writing for a purpose—journalism that connects with people."

Dr. Ruth Lyons new Gifted and Talented Program coordinator for RSU 22

(Continued from page 1)
named a School of Distinction and the only urban school to receive the honor for highest overall performance.

While serving as director of Renzulli Academy, Dr. Lyons pursued her doctoral studies at the University of Connecticut under the direction of Dr. Reis. In June 2013, she completed her Ph.D. in Educational Psychology with a concentration in Gifted Education and Talent Development.

A native of Maine, Dr. Lyons grew up in Wilton, attended middle school and the first two years of high school in Kennebunk, and graduated from the Maine School of Science and Mathematics, the state's magnet high school in Limestone. She then went to Rochester Institute of Tech-

nology, where she received her BFA degree in Photojournalism.

Her teaching career started in the Bronx, NY, where she taught fifth grade as a part of the New York City Teaching Fellows Initiative. Concurrently, she earned a Masters of Science in Teaching degree at Fordham University in 2004.

Dr. Lyons then moved to Skowhegan, ME, where she taught in a looping elementary classroom in SAD 54 and earned a Certificate of Advanced Study in Educational Leadership from the University of Maine. While in SAD 54, she had the opportunity to focus her interests on the high potential and gifted and talented populations at the middle school level.

After five years in Skowhegan, she

became director of Renzulli Academy. During her time as an administrator in Hartford and as a doctoral student at UConn, she made numerous presentations at national and state conferences on the development of the Renzulli Academy, school reform, self-regulation, and the process of identifying gifted and talented students in an urban setting.

She has also been invited to Thailand and the Czech Republic to serve as a consultant for schools implementing the Schoolwide Enrichment Model developed by Dr. Renzulli and Dr. Reis.

Dr. Lyons says she has dreamed of returning to Maine since she completed her Ph.D. program.

"I am in awe of what I have been

able to accomplish in my life thus far, and I feel I owe so much of my success to the great educational opportunities I received in Maine's public schools," she said. "I want to give back to the educational landscape in Maine and enhance the educational opportunities that are available here."

Dr. Lyons will be living in Orono, where her twin sister also lives with her young family.

"My favorite role in life is being an aunt," she says. "My niece Abbie is 6 and my nephew Caleb is 4. They call me 'Aunnie.'"

Dr. Lyons is an avid skier. She rowed on the crew team in college, and she'll be coaching the varsity girls soccer team at Hampden Academy this fall.

New trail system nearly complete at Reeds Brook

The following article was posted to the Bangor Daily News website on July 30, 2014, and published in the print edition on July 31, 2014. Reprinted with permission.

By Dawn Gagnon, BDN Staff
HAMPDEN, Maine —

A group of community volunteers is about to complete construction of Reeds Brooks Trails, a system of outdoor recreation paths that will serve not only Hampden Academy's cross country and ski teams but also the broader community.

The plan is to have the trails completed in time for the start of the new school year, when they would be available for Hampden Academy's cross country and ski teams and anyone else who wants to go out for a walk, run, bicycle ride or snowshoeing, according to Dustin Ramsay, an avid cross country runner and skier who graduated from Hampden Academy in June.

Ramsay is arguably the driving force behind the project, which will result in a 1.6 mile loop of mulch-covered trails. There is plenty of room for expansion, including a proposed connector trail.

Among the adults who served as mentors to Ramsay were Lauren Jacobs, a cross-country ski coach with the Maine Winter Sports Center, and Peter Buzzini of the Penobscot Valley Ski Club.

"Any non-motorized recreation is really what we're trying to encourage on this," Ramsay said in a recent interview. "We really want the emphasis to be that it's a community recreation area and not just an outdoor classroom specific to the school, although we have talked about building an outdoor classroom out there," he said.

RSU 22 Assistant Superintendent Emil Genest sits on the seven-member trails committee assembled to oversee the project, which he said will cost an estimated \$60,000 to \$70,000 in total. The funding is privately raised.

"What's unique about this project is that it's a collaboration of community members, students and [area organizations]," including the Boy Scouts, the Penobscot Valley Ski Club and the Maine Winter Sports Center, he said.

Reeds Brook Trails is located out behind Reeds Brook Middle School and a few minutes walk through the woods from the Hampden Academy parking lot.

RSU 22 acquired that mostly forested parcel as the result of a property swap with the town in which the town gained the old Hampden Academy property for the purpose of redevelopment.

Ramsay said a portion of the trail system was completed in time for the 2013-14 winter ski season. That section was the focus of an Open Trail Night in March.

Hampden resident Jeremy Guerrette, co-owner with Darren Donovan of Ground Perfection Specialists, provided the group a flat rate to bring his company's forestry mulchers to the site to grind wood waste from the trails project into an eco-friendly, permeable mulch surface for the trails.

The mulch is mixed with 3 or 4 inches of topsoil, which Guerrette



A short distance from the bridge over Reeds Brook (see photo on page 1), the trail branches off and forms the South Loop.

said helps prevent erosion.

"It's a great way of doing this, low impact to the environment," Guerrette said Tuesday, describing the process as "cover-as-you-go."

"It's an instant trail," he said, adding that the process eliminates the problem of holes and ruts being left behind.

As his Eagle Scout project, soon-to-be Hampden Academy senior Ryan Cole has coordinated the construction of a wooden bridge that spans Reeds Brook, Ramsay said.

The trail concept was born in 2010, when Hampden Academy began the move to its new building on Western Avenue and had to leave behind the cross country course it had been using for roughly three decades, according to the trail project's website.

"The need for a new cross country course was realized, and plans began taking shape for a year-round recreational trail facility for both Hampden sports teams and the greater community," the website notes.

Ramsay's mother, Melanie Spencer, wrote a grant proposal to the Maine Division of Parks and Public Lands on behalf of RSU 22. The \$50,000 grant, however, required matching local funds. The first year the district applied for the grant, the federal funding fell through. The next year, the local

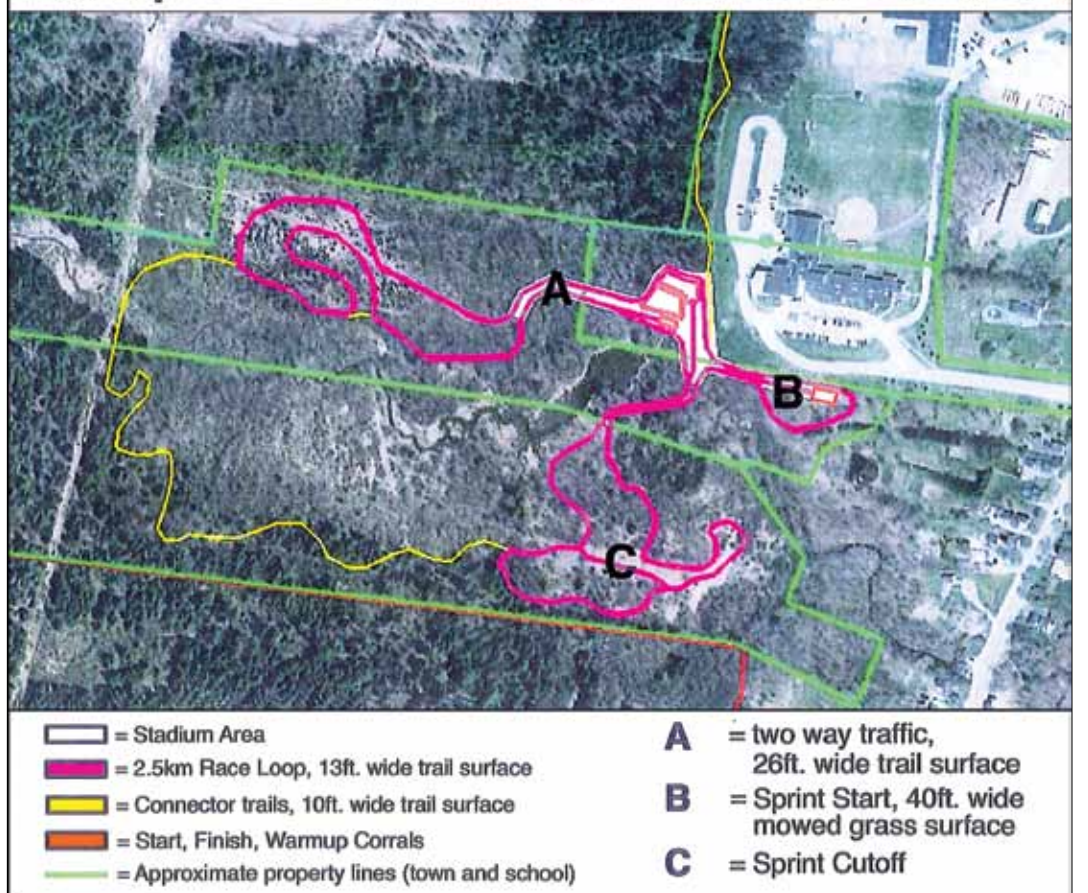
match was no longer available and the project was set aside.

Last fall, the project regained its traction when Ramsay, members of the Penobscot Valley Ski Club and several other interested people came together to revive the original project — this time as an effort to be fueled by volunteers and dona-



REEDS BROOK MIDDLE SCHOOL

Hampden Trail - Revised for Wetlands



tions.

"It was really great that we had maps set up and GPS files of where the route was going to go [leftover from the grant application]. We got started again and we came up with Phase 1," which Ramsay said involved improving some existing trails.

Community volunteers who want

to help with the project are invited to participate in two upcoming trail maintenance days set for 9 a.m. Saturday, Aug. 9 and 9 a.m. Saturday, Aug. 23.

For more information, visit the foundation's website and select the Reeds Brook Trails project from the Special Purpose drop-down menu.

6th Grade Orientation at RBMS August 25

Sixth graders entering Reeds Brook Middle School and their parents are invited to an Orientation program on Monday, August 25, starting at 6:30 p.m.

The evening will begin in our cafeteria. Staff members will introduce you to the important aspects of getting started at Reeds Brook including introductions, navigating the school and your schedule and will assist you along with a try-out on your new locker!

Parents, we will have important information for

you, too, about PowerSchool account access, curriculum information, school athletics and co-curricular opportunities. It will be an informative evening.

We look forward to seeing you on Monday August 25.

* * *

In addition to the Orientation for new 6th graders, Reeds Brook Middle School is planning an Open House for 7th and 8th grade parents early this fall. The date is TBA, with more details to come soon.

McGraw Principal's Message: Welcome Back!

By Kristin Briggs, Principal, McGraw School

Hello, everyone!

I am so excited to start this new school year with all of you! My name is Mrs. Kristin Briggs and I will be taking over for Mrs. Leatham as your McGraw School principal. I have had a very busy summer learning about the school building, meeting new faces, and organizing my office, but now

I'm ready and can't wait to start our new school year together! You will all have to be patient with me as I learn your names and faces, but I'm sure it won't take me too long to remember!

Before I began this job, I was the Assistant Principal at the Ridge View Community School in Dexter. I have also taught first grade, second grade, and Reading Recovery. My husband and I have two children: Alex is 13 and Jillian is 10. Alex enjoys hockey, baseball, and soccer. Jillian loves dancing! They keep us very busy!

We will be holding our annual Open House at McGraw on August 25. Kindergarten families are asked to join us in the gym at 4 p.m., when we will share important information about the upcoming school year and learn about bus safety!

We will welcome all of our kindergarten, first grade, and second grade students to visit from 5 to 6 p.m.. You will get to see your classrooms, teachers, and friends!

Our very supportive PTO will be at our Open House, as well. They will be able to answer ques-



EARL C. MCGRAW SCHOOL



Kristin Briggs

tions about their organization and are providing refreshments for everyone.

Please enjoy your last few weeks of summer vacation and know that there are lots of fun, learning, and adventures ahead for you at McGraw School! See you all soon!

Kristin Briggs named principal at Earl C. McGraw School

Kristin Briggs has joined RSU 22 as the principal at Earl C. McGraw School.

Mrs. Briggs comes to RSU 22 from SAD 46 in Dexter, where she was assistant principal for grades K-4 at the Ridge View Community School for the past four years. Previously, she taught 1st grade, 2nd grade, and Reading Recovery at Dexter Pri-

mary School for 12 years and 1st grade at the Viola Rand School in Bradley for three years.

A native of Bucksport, she graduated from Bucksport High School and the University of Maine. She received her Master's degree in Literacy from UMaine in 2004 and her Certificate of Advanced Graduate Studies in Educational Leader-

ship from the University of New England in Biddeford in 2013.

Mrs. Briggs and her husband Forest live in Dexter. They have two children, a son, Alex, 13, and a daughter, Jillian, 10.

She says the family loves camping. They have a camper, which they most recently used to go camping in Freeport and Leeds. She also enjoys running.

McGraw Open House set for August 25

McGraw School will welcome students and their parents back for the new school year at the annual Open House on Monday, Aug. 25.

Kindergarten families are asked to come to the gym at 4 p.m. to learn about bus safety and to get important information about the upcoming school year.

All students—kindergarten, first grade, and second grade—are invited to the Open House from 5 to 6

p.m. During that time, students and parents will see their new classrooms and meet with their teachers and friends.

IMPORTANT INFORMATION FOR PARENTS OF HEAD START AND PRE-K STUDENTS IN HAMPDEN - NEWBURGH - WINTERPORT - FRANKFORT

Head Start and Pre-K students will not be let off the bus without an adult present waiting at the bus stop. There will be no exceptions.

Volunteers are welcome!

Parent organizations and volunteers are a very important component of the educational school system. From stuffing envelopes to assisting with field trip supervision to organizing the major PTO/PTF fundraisers, volunteers are making a difference in your local schools and communities. If you are interested in becoming one of these volunteers, please contact your local school for more information.

School Opening Information

All Grade Pre-K - 9 district students (Hampden, Newburgh, Winterport, Frankfort) will begin school on Wednesday, August 27, 2014. Grades 10-12 students will begin classes on Thursday, August 28, 2014. Students in Grades 10-12 who are transferring from another district are welcome to come in on Wednesday, August 27.

Visit our website at www.rsu22.us for additional information.

School Nutrition 2014-2015

Our school cafeterias continue to meet federal nutrition standards for school meals, ensuring that meals are healthy and well-balanced and provide students all the nutrition they need to succeed at school. Please encourage your kids to choose school lunch and breakfast!

School meals offer students milk, fruits and vegetables, proteins and grains, with limits on saturated fat and portion size. The following are some of our nutrition guidelines:

- Age-appropriate calorie limits
- Healthy servings of vegetables and fruits (students must take at least one serving of fruit or vegetable with their lunch meal)
- A wide variety of vegetables, including dark green and red/orange vegetables
- Fat-free or 1% milk (flavored milk must be fat-free)
- Whole grains, including bread, pastas, rice, and breakfast items—all grains will be a minimum of 51% whole grain.
- Less sodium
- Legumes (dried peas or beans) at least once weekly
- Students will be offered 1 cup of fruit or vegetable with breakfast.

We're always working to offer RSU 22 students healthy and tasty food choices. We incorporate locally grown and produced foods into our menus whenever possible. We are excited to be serving vegetables grown in our own school garden and green house located at the Reeds Brook Middle School! School meals are a great value and a huge convenience for busy families. We look forward to welcoming your children to our cafeterias this fall!

Lunch prices: Grades K-5 - \$2.20
 Grades 6-8 - \$2.45
 Grades 9-12 - \$ 2.65
 Reduced price - .40
 Adult - \$3.65
 Breakfast - \$ 1.40

Breakfast is FREE for Free AND Reduced students
 Cold lunch or snack milk - .55
 (there is no free milk program)

Elementary Schools Menu:

- Aug 27:** Oven Baked Chicken Nuggets, Rice Pilaf, Whole Grain Bread Stick, Sliced Carrots, Fresh Fruit
- Aug 28:** Breakfast for Lunch: Pancakes and Sausage, 100% Juice Box, Potato Oval Patty, Honeydew Melon
- Aug 29:** Pizza, Caesar Salad, Whole Wheat Yeast Roll, Applesauce

Menus for the month will go home with children after school starts. On the first day of school, August 27, Grade 9 at Hampden Academy will be treated to an **Orientation Lunch** sponsored by the Student Council.

A La Carte menus and price lists for Middle Schools and High School are posted in the cafeterias, home rooms, and on-line. Copies are available to all students at the schools.

Children who received free or reduced priced meals last school year will continue to do so this year until new applications are processed. Please return your completed Application for Free or Reduced Priced Meals within the first week of school. Children who receive Free or Reduced priced meals can get a FREE breakfast at all schools.

**** PLEASE NOTE:** Our school district has the NutriKids electronic Point of Service system. Your children will begin the year with the balance they had in their accounts at the end of last school year. Money can be put in accounts electronically at myschoolbucks.com or brought to school. All children K-12 have a 4-digit ID number that you need to deposit money on-line. You may put as much money in accounts as you like and you can find out electronically or through your child's school what the balance is at any time. This is a DEBIT system. Children need to have money in their accounts in order to purchase meals. With questions please call Chris Greenier at 862-3543, or e-mail cgreenier@rsu22.us.

SCHOOL HOURS AND CONTACT INFORMATION

Hampden Academy 89 Western Ave., Hampden, ME 04444	RUEY YEHLE Principal	Grades 9-12 8:00 a.m.-2:05 p.m.	Main Office Guidance Office Athletic Office	862-3791 862-4111 862-3985
Earl C. McGraw Elementary 20 Main Road North, Hampden, ME 04444	KRISTIN BRIGGS Principal	Grades PreK-2 8:50 a.m.-3:00 p.m.	Main Office	862-3830
Newburgh Early Childhood Center Newburgh Elementary School 2220 Western Ave., Newburgh, ME 04444	HEIDI LeBLANC Director	Pre-K 8:30 a.m.-11:30 a.m.	Main Office	234-2781
Reeds Brook Middle School 28A Main Road South, Hampden, ME 04444	REGAN NICKELS Principal	Grades 6-8 7:40 a.m.-2:02 p.m.	Main Office	862-3540
Leroy H. Smith School 319 South Main St., Winterport, ME 04496	DAWN MOORE Principal	Pre-K & Grades K-4 7:50 a.m.-2:00 p.m.	Main Office	223-4282
Samuel L. Wagner Middle School 19 Williams Way, Winterport, ME 04496	RICHARD GLENCROSS Principal	Grades 5-8 7:33 a.m.-2:10 p.m.	Main Office	223-4309
George B. Weatherbee School 22 Main Road North, Hampden, ME 04444	CHRISTINE BOONE Principal	Grades 3-5 8:50 a.m.-3:00 p.m.	Main Office	862-3254

Special Education Records

Attention individuals who attended RSU #22 schools and whose birthday is before December 31, 1988: The district is in the process of destroying special education records for students who will turn 26 years old as of the December 31, 2014. If you have any interest in obtaining these records before they are destroyed, please contact the Office of Special Education at 862-2774 before December 31, 2013.

Notification for Building Occupants

All RSU #22 schools have been inspected for the presence of asbestos-containing materials. A written plan for the management of these materials has been developed. This plan is available for inspection at the Superintendent's Office located at 24 Main Road North, Hampden, during regular office hours. Copies may be made on request at a cost of 20 cents per page.

YOUR RIGHT TO KNOW

Emil P. Genest, Assistant Superintendent of Schools

The following information is a requirement to adhere to the school district's Integrated Pest Management (IPM) program:

I am writing about subjects that can affect children's health in school and your right to know.

Pest Control. Because pesticides pose risks, the school uses alternative approaches to merely applying pesticides. Control of insects, rodents, and weeds at our schools focuses on making the school buildings and grounds an unfavorable place for pests to live and breed. Through maintenance and cleaning, we will reduce or eliminate available food and water sources and hiding places for the pests. We will also routinely monitor the school areas to detect pest problems and prevent pests from becoming established. Some techniques we will use include pest monitoring, sanitation, pest exclusion, proper food storage, pest removal and—as a last resort—pesticides. This approach is often called Integrated Pest Management (IPM).

Pesticide Use. Sometimes pesticide use may be necessary to control a pest problem. When that happens, the school will use the lowest risk products available. If higher risk pesticides must be used, notices will be posted at application sites and parents, guardians and staff have a right to know.

Your Right to Know. Parents, legal guardians, and school staff will be notified of specific pesticide applications made at the school. Notification will be given at least five days before planned pesticide applications. Pesticide application notices will also be posted in school and on school grounds. Notification need not be given for pesticide applications recognized by law to pose little or no risk of exposure to children or staff.

The school also keeps records of prior pesticide applications and information about the pesticides used. You may review these records, a copy of the school's Integrated Pest Management Policy, and the Pesticides in School regulation (CMR 01-026 Chapter 27) by contacting our IPM coordinator, Emil Genest, at the Superintendent's Office, 862-3255.

If you have any questions, please contact me. For further information about pests, pesticides and your right to know, call the Board of Pesticides Control at 207-287-2731 or visit the Maine School IPM web site at www.thinkfirstspraylast.org/schoolipm.

Family Education Rights and Privacy Act (FERPA)

The United States Family Educational Rights and Privacy Act of 1974, P 93-380, as amended by PL 93-568 (FERPA) requires that formal notice be given to the public that individual pupil records containing a variety of information regarding pupils are maintained by RSU 22. It is the policy of RSU 22 to protect the confidential nature of pupil records and no information is released to non-school parties. Certain records are destroyed when no longer needed to provide educational services to a pupil. However, a permanent record of a pupil's name, address, telephone number, grades, attendance records, classes attended, grade level completed, and year completed shall be maintained by RSU 22 without time limitation.

Parents/guardians of pupils in attendance in RSU 22 schools have the following rights:

1. You may inspect and review any of your child's records.
2. You may receive copies of the records for a minimal duplication charge.
3. You may have someone at your child's school explain or interpret any item in your child's records that you do not understand.
4. You may ask for an amendment of any record on the grounds that it is inaccurate, misleading or violates privacy rights.
5. You may refuse consent for the disclosure of personally identifiable information related to your child to anyone other than school officials or persons acting in an official capacity for the Maine Department of Education or the US Department of Education.

More detailed information can be obtained on our website: www.RSU22.us.

Child Find Information

The purpose of this notification is to ensure that RSU #22 is in compliance with Chapter 101, Maine Special Education regulations, Section 4.7A.

"Child find responsibilities for private school/ home schooled students - each school administrative unit must locate, identify and evaluate all private school students, including religiously-affiliated school students, and home schooled students who have disabilities residing in the jurisdiction of the unit in accordance with § 4.2, Resident Students."

It is the stated intention of the district to provide any eligible special education student for whom it has a responsibility, a "genuine opportunity for equitable participation" in available special education programs.

If, for whatever reason, you feel that your child may be adversely affected by a specific learning problem, please contact the Office of Special Education. Every effort will be made to respond to the concerns of the parent and to proceed with the development of support for the child. Parents of students who are being home schooled should be aware that the district understands its ongoing responsibility for providing special education services to all children within the district.

If there are questions regarding this notification, please contact the Office of Special Education at 862-2774. The Office of Special Education is open between the hours of 8:00 am - 4:00 pm, Monday through Friday with the exception of federal holidays.

Lynne Wells, Director of Special Services, has been appointed as the homeless liaison for RSU #22. It is the responsibility of RSU #22 to notify the citizens/parents of the district on an annual basis that educational services are available to students classified as homeless. If you need further information to determine the rights available to homeless students in our district, please contact Ms. Wells at 862-2774.

RSU 22 Telephone Numbers

Superintendent's Office	862-3255
Superintendent Richard Lyons	
Asst. Superintendent Emil Genest	
Curriculum Office - Mary Giard	862-3844
Special Services - Lynne Wells	862-2774
School Food Service - Chris Greenier	862-3543
Adult Education Office	862-6422
Technology Systems Coordinator	862-3335
Hampden Academy Main Office	862-3791
Guidance Office	862-4111
Athletic Office	862-3985
Alternative Education	862-6429
Earl C. McGraw School	862-3830
Newburgh Early Childhood Center at Newburgh Elementary School	
Heidi LeBlanc, Director	234-2781
Reeds Brook Middle School	862-3540
Leroy H. Smith School	223-4282
Samuel L. Wagner Middle School	223-4309
George B. Weatherbee School	862-3254
Transportation: John T. Cyr & Sons	862-3984
Melanie Van Aken (fax)	862-2054

2014-2015 School Calendar

August						September						October					
M	T	W	Th	F		M	T	W	Th	F		M	T	W	Th	F	
						1H	2	3	4	5	4 4			1	2	3	3 3
						8	9	10	11	12	5 5	6	7	8	9	10	5 5
						15	16	17	18	19	5 5	13H	14	15	16	17	4 4
18	19	20NT	21NT	22NT	0 0	22	23	24	25	26EDI	5 5	20	21	22	23	24	5 5
25M	26T	27P	28	29	3 5 3 5	29	30				2 2 21 21	27	28	29	30	31	5 5 Q 22 22
November						December						January					
M	T	W	Th	F		M	T	W	Th	F		M	T	W	Th	F	
3	4	5	6	7	5 5	1	2	3	4	5	5 5				1H	2V	0 0
10 EDC	11H	12	13	14	4 4	8	9	10	11	12EDI	5 5	5	6	7	8	9	5 5
17	18	19	20	21	5 5	15	16	17	18	19	5 5	12	13	14	15	16	5 5
24 I	25 I	26C	27H	28V	0 3 14 17	22	23	24V	25H	26V	2 2	19H	20	21	22	23	4 4 Q
						29V	30V	31V			0 0 17 17	26 I	27	28	29	30	4 5 18 19
February						March						April					
M	T	W	Th	F		M	T	W	Th	F		M	T	W	Th	F	
2	3	4	5	6	5 5	2	3	4	5	6 I	4 5			1	2	3	3 3 Q
9	10	11	12	13	5 5	9	10	11	12	13	5 5	6	7	8	9	10	5 5
16H	17V	18V	19V	20V	0 0	16	17	18	19	20	5 5	13	14	15	16	17	5 5
23	24	25	26	27	5 5 15 15	23	24	25	26	27	5 5	20H	21V	22V	23V	24V	0 0
						30	31				2 2 21 22	27	28	29	30		4 4 17 17
May						June						School Year					
M	T	W	Th	F		M	T	W	Th	F							
				1	1 1	1	2	3	4	5	5 5	178*	Student Days				
4	5	6	7	8	5 5	8	9	10	11	12	5 5	1	Management Day				
11	12	13	14	15	5 5	15 I	16 I				0 2 10 12 Q	1	Teacher Preparation Day				
18	19	20	21	22	5 5						(178/187)	6	Inservice Days				
25H	26	27	28	29	4 4 20 20							1	Teacher Comp Day				
												3*	Storm days are included				

August 18 - 22
 August 20, 21, 22
 August 25, 26
 August 27
 August 28
 November 10
 November 26
 November 24, 25 January 26 March 6 June 15, 16
 September 26 December 12
 June 14
 June 12

Fall Sports Begin, Hampden Academy
 New Teacher Orientation
 Management, Teacher Prep
 Partial Attendance (PreK-9 students only)
 Full PreK-12 Attendance
 Parent Teacher Conferences (Early Dismissal)
 Teacher Comp Time (no school)
 Inservice - no school
 Early Dismissal - Inservice
 Hampden Academy Graduation
 Last Student Day

Ranking Period

1 46 days
 2 45 days
 3 43 days
 4 44 days
 178

RSU 22 - 2014-2015

Hampden

6-12 students, AM & PM buses

Hampden 6-12 students have the same bus number in the morning as they do in the afternoon. Please have students outside ready waiting for the bus 5 minutes before the bus arrives.

Run #22

Starts at 6:40 from the corner of Meadow Road and Route 69 headed towards Kennebec Road, including end of Piper Woods Road to the Hampden/Winterport town line on Route 69, end of Rae Way, end of Woods Road, left on Kennebec Road to Newburgh town line, including end of Merchant Road from Box 1420 Kennebec Road to Box 202, turn right on Emerald Drive, right on Wessnette Drive, right on Monroe Road to town line, end of Norway Drive, end of Liberty Lane, drop students at RBMS, drop students at HA.

Run #23

Starts at 6:45 at the corner of Route 1A and Coldbrook Road to Hermon town line, including Old Coldbrook Road, left on Coldbrook Road from Route 1A to Route 202, including a left on Laskey Lane, then to Main Trail, right on Emerson Drive, left on Ruth Avenue, end of Jay Lane, end of Cool Brook Lane, left on Lindsey Way, right on Papermill Road, left on Emerson Mill Road, end of Ledgewood Drive, right on Manning Mill Road, drop students at RBMS, drop students at HA.

Run #26

Starts at 6:50 Back Winterport Road from Baker Road, Kennebec Road box 204 to 1, Main Road South 1A box 1 to Winterport town line, right on Gee Highland Ridge, right on Foster Avenue, Rawley Drive, Clark Circle, end of Perkins Road, end of Kincaid Road, right on Hopkins Road, right on Pleasant Street, left on Cross Street, left on Summer Street, end of Ferry Street, end of Swan Avenue, end of Orient Avenue, drop students at RBMS, drop students at HA.

Run #28

Starts at 6:45 at 1 Main Road North to Bangor town line, end of Elm Street East and West, end of Dudley Street, Old County Road, end of Mountain View, end of Ball Park Road, end of Patterson Road, end of Wheeldon Heights, left on Perry, left on Coolidge Avenue, end of the following roads Northern Avenue, Hamel Avenue, Triangle Road, Kelly Lane, Gaftway Street, School House Road, Marina Road, Hillside Drive, (Summit Dr.) right on Francis Drive, left on Sophie Lane, end of Riverview, (Marion Drive), end of Carver Road, right on Daisey Lane, end of the following roads; Horseshoe Lane, George Street, William Street, left on Charles Street, left on Sunset Avenue, ends of Linden, Stoney Brook, and West Brook, drop students at RBMS, drop students at HA.

Attention Bus #28 Students

To alleviate the number of students who ride Bus #28 in the afternoon, it will pick up at RBMS first, leave from the school, drop off students on Main Road to Daisey Lane and circle in the Terrace, then return to Hampden Academy and pick up the HA students.

Run #31

Starts at 6:40 Patterson Road, Meadow Road, Gray Stone Creek Road, Ichabod Lane, Rt. 69 from Meadow Road to the intersection blinking light in Newburgh, Rt. 9 Western Avenue to Sawyer Road, right on Sawyer Road, left on Canaan Road, drop students at RBMS, drop students at HA.

Run #34

Starts at 6:40 right on Miller Road, left on Fowler Road, right on Shaw Hill Road, right on Bog Road, right on Pond Road, right on North County to town line, left on Stetson Drive, right on Route 9 to Sawyer Road, Route 9 from Box 1088 to 372 including left on Deer Hill Lane, end of Goodell Farm Road, right on Aarons Way, left on Dunton Circle, right on Silver Drift Lane, right on Johnny's Way, right on Bowen Drive, drop students at RBMS & HA.

Run #36

Starts at 6:45 Mayo Road, Rt. 9 Western Avenue, up to and including Hughes Blvd., Town Farm Road, end of Country Meadows, Griffin Avenue, end of Jewel Drive, Sidney Blvd., end of Wilbur Drive, Evergreen Drive, Surrey Lane, Constitution Avenue. end of Independence Avenue (Liberty Avenue), end of Dewey Street, straight on Cottage Street, left on Canoe Club Road, end of Rowell Road, drop students at RBMS, drop students at HA.

REMINDER: IT'S THE LAW

Maine state law prohibits any vehicle (emergency or other) to pass a school bus with its red lights flashing on any road, in any parking lot, or in the schoolyard.

K-5 students, AM & PM buses

Hampden K-5 students have the same bus number in the morning as they do in the afternoon.

Run #22

Starts at 7:50 from Piperwoods Road on Route 69 to Hampden/Winterport town line, including right on Rae Way, end of Hampden Woods Road, left on Kennebec Road, to Hampden/Newburgh town line including end of Merchant Road, Kennebec Road to Meadow Road including right on Emerald Drive and right on Wessnette Drive.

Run #23

Starts at 7:50 at the corner of Route 1A and Coldbrook Road to Hermon town line, including Old Coldbrook Road, left on Coldbrook Road from Route 1A to Route 202, including a left on Laskey Lane, then to Main Trail, right on Emerson Drive, left on Ruth Avenue, right on Jay Lane, end of Cool Brook Lane, left on Lindsey Way, right on Papermill Road, left on Emerson Mill Road, end of Ledgewood Drive, right on Manning Mill Road.

Run #24

Start at 7:50 at 445 Main Road North to Bangor town line, including Mountain View Road, including Hunting Lane, end of Kelly Lane, end of Gaftway Street, end of Marina Road, end of Hillside Drive (Summit Avenue), left on School House Lane, Old County Road, end of Ballfield Road, left on Triangle Road, right on Hamel Avenue, right on Perry Road, left on Coolidge Avenue, left on Patterson Street, left on Wheeldon Heights, Northern Avenue Ext., to the end of Old County Road.

Run #25

Starts at 7:50 on Patterson Road, left on Meadow Road, Gray Stone Creek Road, left on Ichabod Lane, right on Meadow Road, end of Gray Stone Creek Road, right on Route 69 from Meadow Road to the intersection blinking light in Newburgh, including end of Babcock Lane, left on Butternut Lane, left on Acorn Drive, right on Route 9 Western Avenue Box 2021 to Box 1102, right on Sawyer Road, left on Canaan Road.

Run #26

Starts at 7:55 at 1 Main Road South to Winterport town line, including end of Orient Avenue, end of Swan Avenue, right on Pleasant Street, right on Cross Street, left on Summer Street, end of Ferry Road, left on Hopkins Road, right on Gee Way, right on Foster Avenue, right on Rawley Drive, right on Clark Circle, end of Perkins Drive, end of Kincaid Road (Hatch Lane).

Run #29

Starts at 7:50 corner of Main Road, left on Route 9 Box 1 to Hughes Blvd., including end of Dewey Street, left on Constitution Avenue, left on Independence Avenue, left on Liberty Avenue, right on Evergreen, right on Surry Lane, right on Sidney Blvd., end of Wilbur Drive, right on Griffin Avenue, end of Jewell Drive, left on Hughes Blvd., right on Town Farm Road, end of Country Meadow Drive.

Run #31

Starts at 7:55 Route 9 from Hughes Blvd. to Sawyer Road Box 372 to Box 1088, including left on Bowen Drive, left on Johnny's Way, right on Dunton Circle, right on Silver Drift Lane, left on Aarons Way, end of Goodell Farm Road, right on Deer Hill Lane, left on Sawyer Road, left on Canaan Road.

Run #34

Starts at 7:50 right on Miller Road, left on Fowler Road, right on Shaw Hill Road, right on Bog Road, right on Pond Road, right on North County to town line, left on Stetson Drive, right on Mayo Road, drop students at McGraw & Weatherbee.

Run #35

Starts at 7:50 at 1 Kennebec Road to Monroe Road, including left on Monroe Road, left on Norway Drive, right on Back Winterport Road to Hampden town line, right on Baker Road, including end of Partridge Road and Libbey Lane.

Run #36

Starts at 7:50 at 1 Main Road North to Box 440, including left on Daisey Lane, left on Horseshoe Lane, left on Charles Street to Edgewood Dr., left on Stoneybrook Road, left on Linden Street, right on Williams Street, right on George Street, left on Sunset Avenue. right on Westbrook Terrace, end of Carver Road, right on Riverview Road, left on Marion Dr., left on Francis Dr., left on Sophie Lane, Main Road North, including end of Dudley Street (Short Wharf Road), end of Elm Street East, end of Elm Street West, left on Canoe Club Road, left on VFW Road, end of Rowell Dr., left on Cottage Street.

Frankfort

FRANKFORT K-12. Please have students outside ready waiting for the bus 5 minutes before the bus arrives.

K-12 students, AM buses

Run #20

Starts at 6:45 on Swanville Road, end of Parker Lane, right on Town Hill Rd 6:53, end of Atwood Drive, right on Marsh Stream Road 7:00, end of Rob Lane, straight on Hamm Road 7:05, end of Moore Lane. Drop students at Wagner 7:23 then Smith School and then continue to HA and drop HA students.

Run #40

Starts at 6:45 on Black Hill Road, end of Lake Road, left on North Searsport Road 6:50, end of White Orchard Road, end of Staples Road, end of Candy Lane, left on Loggin Road (upper part) 6:57 turn and finish Loggin Road (lower part) 7:03. Drop students at Wagner 7:23 then Smith School and then continue to HA and drop HA students.

Run #41

Starts at 6:45 end of Averill Road, straight on Route 1A Bangor Road, right on Mount Waldo Road, left on Old Belfast Road 6:48 (upper part), turn and finish Old Belfast Road (lower part) 6:53, right on West Hill Road 6:58, right on Old Stage Road 7:03, right on Tyler Lane 7:10, right on Treat point Road 7:15. Drop students at Wagner 7:23 then Smith School and then continue to HA and drop HA students.

K-8 Smith and Wagner students, PM buses

Run #20

Starts on Treat Point Road, left on Old Stage Road, right on Tyler Lane, right on West Hill Road, right on Hamm Road, straight on Marsh Stream Road, left on Town Hill Road, left on Swanville Road, end of Parker Lane.

Run #40

Starts at the end of Averill Street, straight on Route 1A, right on Mount Waldo Road, left on Old Belfast Road (upper part), turn and finish Old Belfast Road (lower part), left on Loggin Road, turn at end, right on North Searsport Road, end of Candy Lane, end of Staples Road, right on Black Hill Road, end of Lake Road.

9-12 Hampden Academy students, PM bus

Run #41

Starts left Treat Point Road, right on Old Stage Road, right on Tyler Lane, right on Old Belfast Road, left on Mount Waldo Road, left on Loggin Road, right on Hamm road, turn at Danforth Lane on right, straight on Marsh Stream Road, end of Rob Lane, left on Town Hill Road, straight on Black Hill Road, end of Lake Road, left on North Searsport Road, end of White Orchard Road.

PARENTS OF K-4 STUDENTS:

Please make sure the bus driver sees you when we drop your child off.

If you wish to have your child dropped off without someone physically present at your child's bus stop, you must sign a permission form indicating this. This form is included in your child's packet of forms, which will be sent home from their school during their first week.

This form is only for students in Grades K - 4 - Not for Head Start or Pre-K

Transportation Services

RSU #22 contracts with John T. Cyr & Sons Inc. for transportation services. The transportation of students to and from school is a joint effort between the school district and John T. Cyr & Sons Inc. You may contact John T. Cyr & Sons Inc. at 862-3984 to discuss bussing issues if the need should arise. However, please do not hesitate to contact the Office of the Superintendent of Schools at 862-3255 with any comments or concerns.

School Bus Schedules

Winterport

K-8 students, AM & PM buses 9-12 (HA) students, AM buses

Note: Winterport K-8 students have the same bus number in the morning as they do in the afternoon. Please have students outside ready waiting for the bus 5 minutes before the bus arrives.

Run #24

Starts at 6:40 K-12 at Baker Road and Route 1A, left on Moyses Road, left on Back Winterport Road, right on Twining Road, left on Twining Lane, right on Coles Corner Road, left on Cove Road, right on Vero's Way, end of Cedarwood Drive, end of Comikev Lane, left on Old Cove Road, right on Cove Road, left on Coles Corner Road, left on Staples Road, left on Coles Corner Road, end of Artic Lane, end of Irish Lane. Drop Wagner students, drop Smith students, continue to HA and drop HA students.

Run #25

Starts at 6:40 K-12 at the end of North Road Dixmont town line, end of Perkins Road, left on Clark Road, including end of Brown Lane, end of Windy Hill Road, then right on Rancourt Road, right on Boston Road, end of Meadow Lane, end of Chickadee Lane, left on Airport Road, left on Oak Street, right on Elm Street. Drop Wagner students, drop Smith students, continue to HA and drop HA students.

Run #27

Starts at 6:40 K-12 on Goshen Road, end closest to Stream Road, all of Goshen Road, including end of Joshua Lane, right on Haley Road, right on Monroe Road, all of Monroe Road (including Blueberry Hill and Sunken Bridge Road) to a left on Route 1A, to a right on Washington Street, including Dean Street and Silver Lane, end of Willow Street, end of Lincoln Street, end of Water Street, left on Route 1A to Mt. View Drive, including end of Ferry Street, end of Kaler Street, end of Sampson Street, end of Church Street, end of Steamboat Avenue, left on Marine Street, right on Holmes Street, including end of Mechanic Street and Parsonage Street. Drop Wagner students, drop Smith students, continue to HA and drop HA students.

Run #29

Starts at 6:45 K-8 ONLY, Route 1A North Winterport line to School Street, including end of Landing Lane, left on Old County Road, left on Riverview Heights, end of Perry Drive, end of Garden Drive, end of Birch Drive, left on Upper Oak Point (K-12), right on Hackett Road, end of Lower Oak Point, end of Penobscot Lane, end of Seabreeze Lane, right on B. Johnson Lane, including end of Taylor Lane, end of Roxy Lane, end of Sky View Lane, end of Memorial Drive, end of Merrill Street, end of School Street, right on Wig Street, left on Park Drive, left on Rob Clark Road. Drop Wagner students, drop Smith students, continue to HA and drop HA students.

Run #32

Starts at 6:45 K-12 corner of Kendall Road and Stream Road, straight on Stream Road, right on Goshen Road, right on Kendall Road, left on Stream Road, including end of Fisher Road, right on Tibbets Bridge Road, right on Stream Road, including end of Pineview Drive (Mylon Lane and Spruce Drive), end of Hasey Lane, end of Elderberry Lane, end of Apple Hill Road, town line Winterport, South Alley Road to Mountain View Drive to Fox Run Road. Drop Wagner students, drop Smith students, continue to HA and drop HA students.

Run #35

Starts at 6:40 K-12 on Meadow Road (Coles Corner Road end), end of Proctor Lane, right on Lebanon Road to Winterport town line, left on Town Farm Road, right on Lebanon Road including end of Harmony Lane, end of Beaver Road, end of Bass Lane, straight on Lebanon Road, end of Cushing Street. Drop Wagner students, drop Smith students, continue to HA and drop HA students.

9-12 (HA) students AM Buses on Route 1A

Bus #27

P/U 7:20 Route 1A Main Road box 497 to box #331 including Holmes Street, Mechanic Street, Marine Street. Pick up locations will be on Main Road.

Bus #24

P/U 7:25-7:30 Route 1A Main Road from box #303 to box #909 just before but not including Memorial Drive, ends of the following roads - Steamboat, Church Street, Sampson Street, Kaler Street, Elm Street, Ferry Street, Water Street, Willow Street, Commercial Street, Silver Lane, Dean Street, Washington Street, Pleasant Street, School Street, Merrill Street. Pick up locations will be on Main Road.

Bus #32

P/U 7:25-7:30 Route 1A Main Road from Memorial Drive to box #1221 including ends of the following roads - Skyview Lane,

Attention parents of Winterport students, Grades 9-12:

After bus unloads at Wager and Smith, Hampden Academy students who live on Route 1A North, including all the side roads except for Upper Oak Point, will take the following buses designated for their area.

Bus #24

P/U Route 1A from Smith School to box #909 on the Main Road including ends of all the following roads - Whig Street, Steamboat, Church Street, Sampson Street, Kaler Street, Ferry Street, Cushing Street, Commercial Street, Lebanon Road, Dean Street, Washington Street, School Street, Merrill Street. Pick up locations will be on Main Street.

Bus #32

P/U Route 1A Main Road from Memorial Drive to box #1221 including ends of the following roads - Skyview Lane, Seabreeze Lane, B. Johnson Lane, Taylor Lane, Roxy Lane, Penobscot Lane. Pick up locations will be on Main Road.

Bus #25

P/U on Route 1A Main Road from Lower Oak Point to Birch Drive - Hackett Road. Pick up locations will be on Main Road.

Bus #35

P/U on Route 1A Main Road from box 1378 to the Winterport Town Line box #1660 including the following roads - Garden Drive, Cedarwood Drive, Perry Drive, Riverview Heights, Old County Road. Pick up locations will be on Main Road.

Seabreeze Lane, B. Johnson Lane, Taylor Lane, Roxy Lane, Penobscot Lane. Pick up locations will be on Main Road.

Bus #25

P/U 7:25-7:30 on Route 1A Main Road from Lower Oak Point to Birch Drive - Hackett Road. Pick up locations will be on Main Road.

Bus #35

P/U 7:25-7:30 on Route 1A Main Road from box 1378 to the Winterport town line box #1660 including the following roads - Garden Drive, Cedarwood Drive, Perry Drive, Riverheights, Old County Road. Pick up locations will be on Main Road.

PM buses

Run #25HA

Leaves Hampden Academy 2:11 Route 1A North after B. Johnson Lane to Route 1A South Winterport town line, including end of Penobscot Lane, end of Seabreeze Lane, end of Sky View Lane, end of Memorial Drive, end of Cushing Street, end of Elm Street, end of Lebanon Street, end of Wig Street, end of Merrill Street, end of School Street, end of Washington Street, end of Dean Street, end of Commercial Street, end of Ferry Street, end of Kaler Street, end of Sampson Street, end of Church Street, end of Steamboat Street, end of Marine Street, end of Holmes Street, including Silver Lane, Water Street, Lincoln Street, Mechanic Street, Parsonage Street, right on Mt. View, right on Fox Run, right on Stream Road, end of Elderberry Street, end of Hasey Lane, end of Pineview Drive, (Mylon Lane/Spruce Drive), end of Fisher Road, end of Tibbets Bridge, right on Kendall, Goshen Road, Haley Road, Monroe Road, (Winterport side of Route 69), Clark Road, end of Joshua Lane, end of Windy Hill, end of Brown Lane, end of Rabbit Hill, end of North Road, end of Perkins Road.

Run #37

Leaves Hampden Academy 2:11, Route 1A North from Winterport town line to and including B. Johnson Lane, including end of Landing Road, Old County Road, Riverview Heights, end of Perry Road, end of Garden Drive, end of Birch Drive, left on Upper Oak Point, end of Hackett Road, end of Lower Oak Point, Baker Road from Route 1A, including end of Moyes Road, Back Winterport Road from Hampden town line to the end of Coles Corner Road, including Twinning Cove Road, end of Comikev Lane, end of Cedarwood Lane, end of Veros Way, end of Staples Road, end of Schoolhouse Lane, end of Rob Clark Road, Route 69 from Route 1A Winterport to Hampden town line, including Airport Road, Boston Road, Meadow Road, Town Farm Road, including end of Alderwood Drive, end of Beaver Road, end of Harmony Lane, end of Bass Lane, end of Rancourt Road, end of Meadow Lane, end of Chickadee Lane, end of Proctor Lane, Monroe Road from the Winterport/Hampden town line, right on Route 69 to the Winterport/Hampden town line.

Newburgh

Newburgh K-12 students have the same bus number in the morning as they do in the afternoon. Please have students outside ready waiting for the bus 5 minutes before the bus arrives.

6-12 students, AM & PM buses

Run #21

Starts at 6:40 on Chapman Road (Western Avenue end), end of Flynn Road, right on Kennebec Road to Christmas Tree Farm, end of Dahlia Farm Road, end of Grant Road, right on Littlefield Road to Box 310, right on Severance Road, right on Kennebec Road to town line, end of Babcock Road. Drop students at RBMS continue to HA and drop HA students.

Run #30

Starts at 6:40 on Lindsay Road (Route 9 Western Avenue end), end of Bates Road, left on North Road to box 1223, end of Kenniston Road, straight on North County Road, left on Route 69 to intersection of the blinking light on Route 69 and Route 9. Drop students at RBMS continue to HA and drop HA students.

Run #33

Starts at 6:40 on Mudget Road (Kennebec Road end), end of Frank West Road, end of Croxford Road, left on Route 9, end of Thurlow Road, right on Miles Road, end of Red School House Road, right on Route 9 to Dixmont town line, end of Kennard Road, all of Route 9 to Hampden line. Drop students at RBMS continue to HA and drop HA students.

K-5 students, AM & PM buses

Run #21

Starts at 7:40 on Chapman Road (Western Avenue end), end of Flynn Road, right on Kennebec Road to Christmas Tree Farm, end of Dahlia Farm Road, right on Littlefield Road to Box 310, right on Severance Road, right on Kennebec Road to town line, end of Babcock Road. Drop students at Weatherbee continue to McGraw and drop McGraw students.

Run #30

Starts at 7:40 on Lindsay Road (Route 9 Western Avenue end), end of Bates Road, left on North Road to Box 1223, end of Kenniston Road, straight on North County Road, left on Route 69 to intersection of the blinking light on Route 69 and Route 9. Drop students at Weatherbee continue to McGraw and drop McGraw students.

Run #33

Starts at 7:40 on Mudget Road (Kennebec Road end), end of Frank West Road, end of Croxford Road, left on Route 9, end of Thurlow Road, right on Miles Road, end of Red School House Road, right on Route 9, to Dixmont town line, end of Kennard Road, making a stop at Newburgh School and all of Route 9 to Hampden line. Drop students at Weatherbee continue to McGraw and drop McGraw students.

Newburgh Head Start AM & PM Bus runs

Run #33

AM bus only covers the following Roads - Mudget Road, Miles Road and Route 9 from the town line Dixmont to the old Newburgh School.

Run #21

PM bus only covers the following Roads - Chapman Road, Kennebec Road from the Christmas Tree Farm to the town line Hampden/Newburgh, Littlefield Road, Severance Road, end of Dahlia Farm Road.

Run #30

PM bus only covers the following roads - Lindsey Road, North Road, North County Road, Route 69 from North Road to box 2142.

A FRIENDLY REMINDER

No through traffic will be allowed on the road behind Weatherbee School to McGraw School during the school day. BUSES ONLY

No through traffic allowed on the road in front of Reeds Brook Middle School from 7 a.m. to 8 a.m. and 1:45 p.m. to 3:30 p.m. Parents can use the back parking lot (gym entrance) to drop and pick up their students.

Attention parents of Newburgh students:

Newburgh students who live on Route 69 from Route 9 to the top of the hill to the Hampden town line will take the following buses: Bus 31 HA and RBMS and Bus 25 Weatherbee and McGraw school.

Education Foundation supports Reeds Brook Trail System

The RSU 22 community is blessed to have many partnerships that not only enhance the education of our students, but also serve to bring the people of the community together. One such inspirational project that has grown dramatically within the last year is the Reeds Brook Trail System. Working as a team, the students, teachers and community members of RSU 22 have recently completed a large section of "phase two" of the trail system. This trail system, located in the heart of Hampden, will be a multi-purpose network of paths that will be available for students and community members to access for both educational and recreational purposes.

The RSU 22 Education Foundation supports this worthy endeavor because we believe that it is a working example of what makes our schools exciting for our students and academically rigorous as well. As part of our mission statement we place special emphasis on innovative projects and community partnerships. The Reeds Brook Trail System will provide future generations of our children a practical and hands-on learning environment for a variety of subjects. Teachers will be able to take their students out of the classroom and provide a high quality learning environment that is es-

essential for student success. Our athletic teams will also be able to access the trails year round for training and competition so that they can continue to achieve the high level of success that they have become known for.

Innovative projects such as this are worthy our support and many in the community have already stepped forward to help establish the trail system. Troop 41 of the Boy Scouts of America and the Penobscot Valley Ski Club are among the groups that have provided much needed muscle power. In addition, Katahdin Trust Company recently donated five thousand dollars in financial support and going well beyond their contractual obligations, Ground Perfection Specialist Corporation has provided a forestry mower in order to clear trails for further development.

This worthy project is still in need of continued support from our community. The RSU 22 Education Foundation has established a link to donate via credit card on our website at rsu22educationfoundation.org. In addition, the Reeds Brook Trail System has instituted a corporate donor program so that local businesses are able to support the trail system as well.

Simply access their website through the RSU 22 Education Foundation page to find out more. See you on the trails!

Teachers Earn Gold Star Awards!

At the close of the school year, 18 teachers in RSU #22 received Gold Star Awards from students and their families for their exemplary teaching. For a gift of \$25, which goes to the Mini Grants for Teachers Program, teachers received an award certificate and letter from Foundation President Peter Witt. In all, 21 awards were given out this year, netting \$535 for the Mini Grants Program. Teachers receiving awards this year were: Leah Smith, Morgan McCluskey, Amy Hanson, Sara Devine, Angela Pratt, Bonnie Walker, Pat Lyons, Jennifer Bouchard, Matt Madore, Adam Knowles, Kacey Cole, Jennifer Bowman-McKay, Donna Megquier, Dawn Hussey, Georgiana Jackson, Joyce Sturdee, Kristin Leithiser and Michael Ditzel. Congratulations to all the awardees, and thank you for the generous support from our District families.

The Gold Star Awards are an excellent way to let that special teacher know that you appreciate him or as well as helping support the educationally inspired activities that are written about on this page. The next chance to give a Gold Star will be this fall, so be on the lookout for flyers in your child's folder.

RSU 22 Education Foundation Board seeks to expand

The RSU 22 Education Foundation is actively seeking new board members and committee volunteers to join a growing non-profit organization that supports the students and teachers in the school district. Serving the towns of Frankfort, Hampden, Newburgh and Winterport, the Education Foundation funds initiatives with grants that help foster innovative educational projects. If you have a desire to connect with others who share an interest in quality education for children please consider joining the team.

Interested citizens or those wishing to nominate candidates for the Foundation Board of Directors should email hanish@roadrunner.com. To learn more about the RSU 22 Education Foundation, visit www.rsu22educationfoundation.org.



Dustin Ramsey with forestry mower.



RSU 22 Education Foundation Community Partners for Inspired Education

Education Foundation Mini-Grants program aiding inspired education

Last fall the RSU 22 Education Foundation was able to award seven mini grants to teachers throughout the school district. These grants, which are made possible by the generous support of businesses and members of the community enable the Education Foundation to supplement classroom budgets and promote inspired educational programming to the students of RSU 22. One of the grants awarded during the fall grant cycle was to help fund a Boston field trip for Ms. Megquier's fifth grade class at the Weatherbee School. The RSU 22 Education Foundation checked in with Ms. Megquier to find out how the trip went.

RSU22 Education Foundation: "What was the inspiration/genesis for taking this trip to Boston and what kind of input might the students have had in it being selected as a destination?"

Ms. Megquier: "A parent initially suggested the overnight trip to the Museum of Science 9 years ago. When I talked it over with my students, they were eager to help fundraise to make it happen. After hearing about that first trip from friends and siblings, subsequent classes were extremely excited to go and looked forward to it all year. We decided to leave earlier in the day and add one or two hours at the New England Aquarium followed by a walk on the "Freedom Trail." I have to admit that I wasn't exactly thrilled at the thought of sleeping on the floor with 300 5th and 6th graders that first year, but once I saw how much my students got out of the trip, I knew I would go again and again."

RSU22 Education Foundation: "What did students see and experience on the field trip that they learned about in class this year?"

Ms. Megquier: "The field trip supported our existing science and social studies curricula, which cover animal classification, light, sound, electricity, the American Revolution, etc. During lessons I would frequently make references to what we would see at the Museum of Science, New England Aquarium, and on the Freedom Trail. We integrated technology and language arts on many occasions."

RSU22 Education Foundation: "What did kind of activities did the students engage in while in Boston?"

Ms. Megquier: "Our first stop was the New England Aquarium, where students saw innumerable marine animal species and a seal training show. We then walked



5th grader enjoys the Boston Aquarium

up to the site of the Boston Massacre, the Old North Church and Paul Revere's House. By late afternoon, we arrived at the Museum of Science, where we enjoyed the many exhibit halls. We also had a small group science lesson with a museum staff member, a lightning show in the Hall of Electricity, an iMax presentation on ancient Greece, and a night sky show at the Hayden Planetarium, all specifically geared for our age group. Students and chaperones "camped" on the museum floor overnight.

RSU22 Education Foundation: "Were there any surprises that came from having your students participate in this field trip?"

Ms. Megquier: "Not really, but.....The Museum of Science has mice that occasionally scamper around at night. My students were thrilled - the chaperones, not so much!"

RSU22 Education Foundation: "Can you explain how the Education Foundation mini-grant helped you facilitate this event?"

Ms. Megquier: "Between the overnight program cost at the museum, the admission fees for the aquarium, and the Cyr Bus charter, we needed to raise almost \$3,000. Students followed our progress week by week and learned to work together toward a common goal. The \$250 mini-grant gave us a real boost in between fund raising events. Thank you!"

Please consider supporting classroom programs such as this by making a contribution to the RSU22 Education Foundation or by purchasing a Gold Star Teacher's Award. To learn more, visit our website at rsu22educationfoundation.org.